

WESTERN SYDNEY UNIVERSITY PENRITH.

We acknowledge and celebrate the rich and diverse cultures, languages and knowledges of the Aboriginal peoples whose lands and waterways are the places upon which Western Sydney University teaching and learning occurs.

We pledge a continued commitment to all Aboriginal and Torres Strait Islander peoples whose connection to country we honour and deeply respect.



WELCOME TO WESTERN.

An anchor institution in Western Sydney, helping drive social and economic development in the region.

MISSION

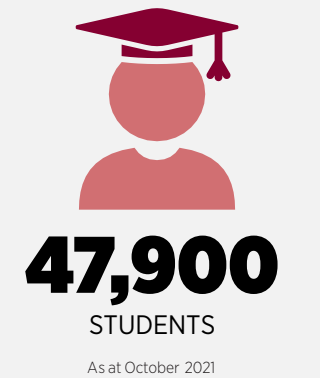
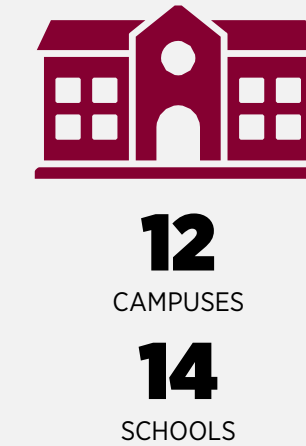
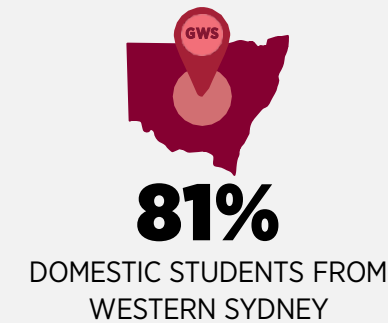
Starting in Western Sydney, our students will succeed, our research will have impact and our communities will thrive through our commitment to excellence, sustainability, equity, transformation and connectedness.



WHY WESTERN SYDNEY UNIVERSITY?



FOR TEACHING, EMPLOYABILITY,
INTERNATIONALISATION, FACILITIES,
INNOVATION AND INCLUSIVENESS²



WESTERN GROWTH.

Co-creating the **cities of the future** across the region.

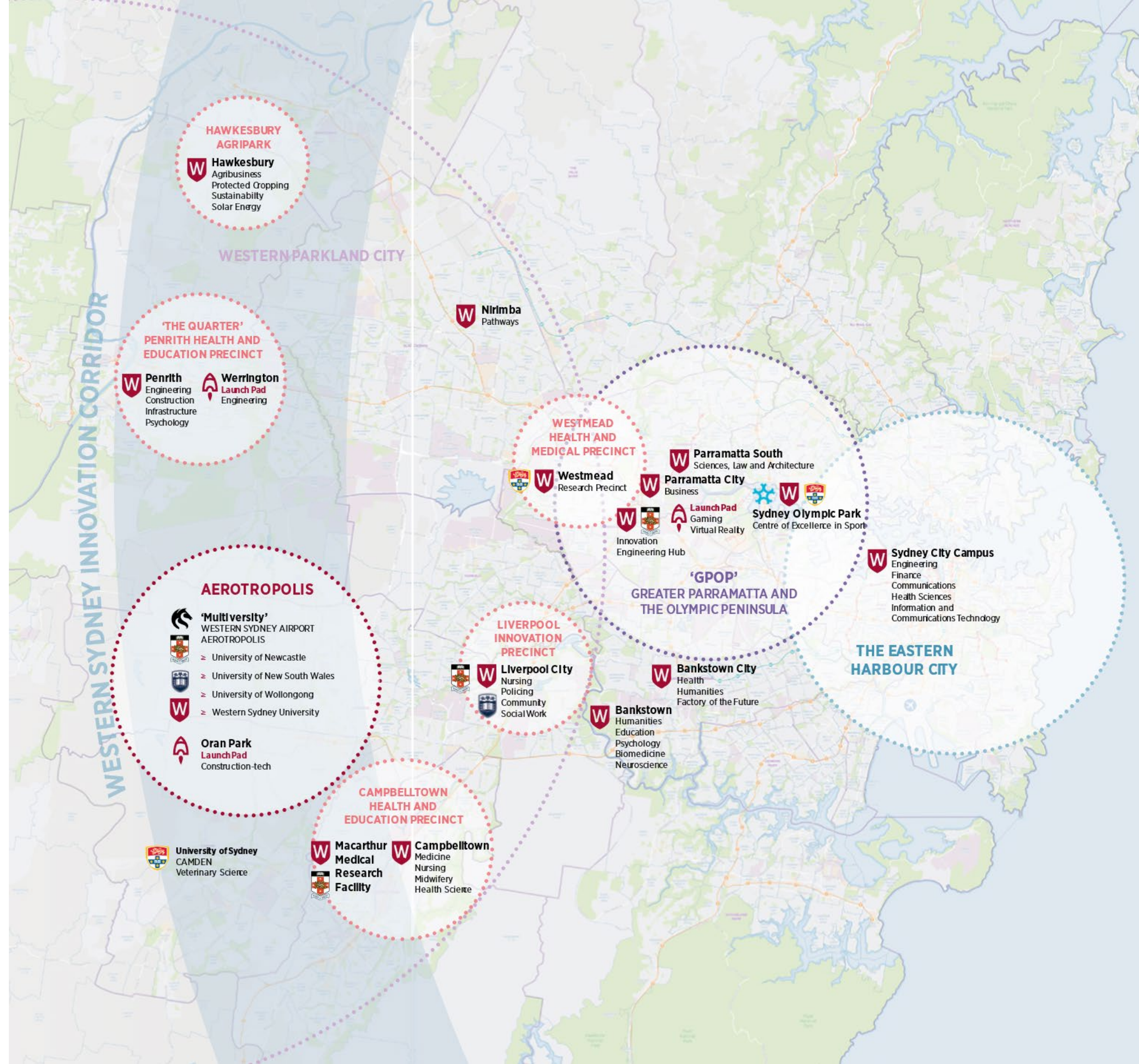
- High amenity, technology rich campuses
- Collaborative, activity based learning
- Access to work opportunities
- Industry and business collaboration
- Closer to transport, jobs, accommodation, research and industry partners
- Boosting the social, health, wellbeing and economic environment of Western Sydney
- Incorporating learning, teaching and research projects into real world environment with living laboratory opportunities
- Catalysing CBD development and community engagement.



INNOVATION CORRIDOR.

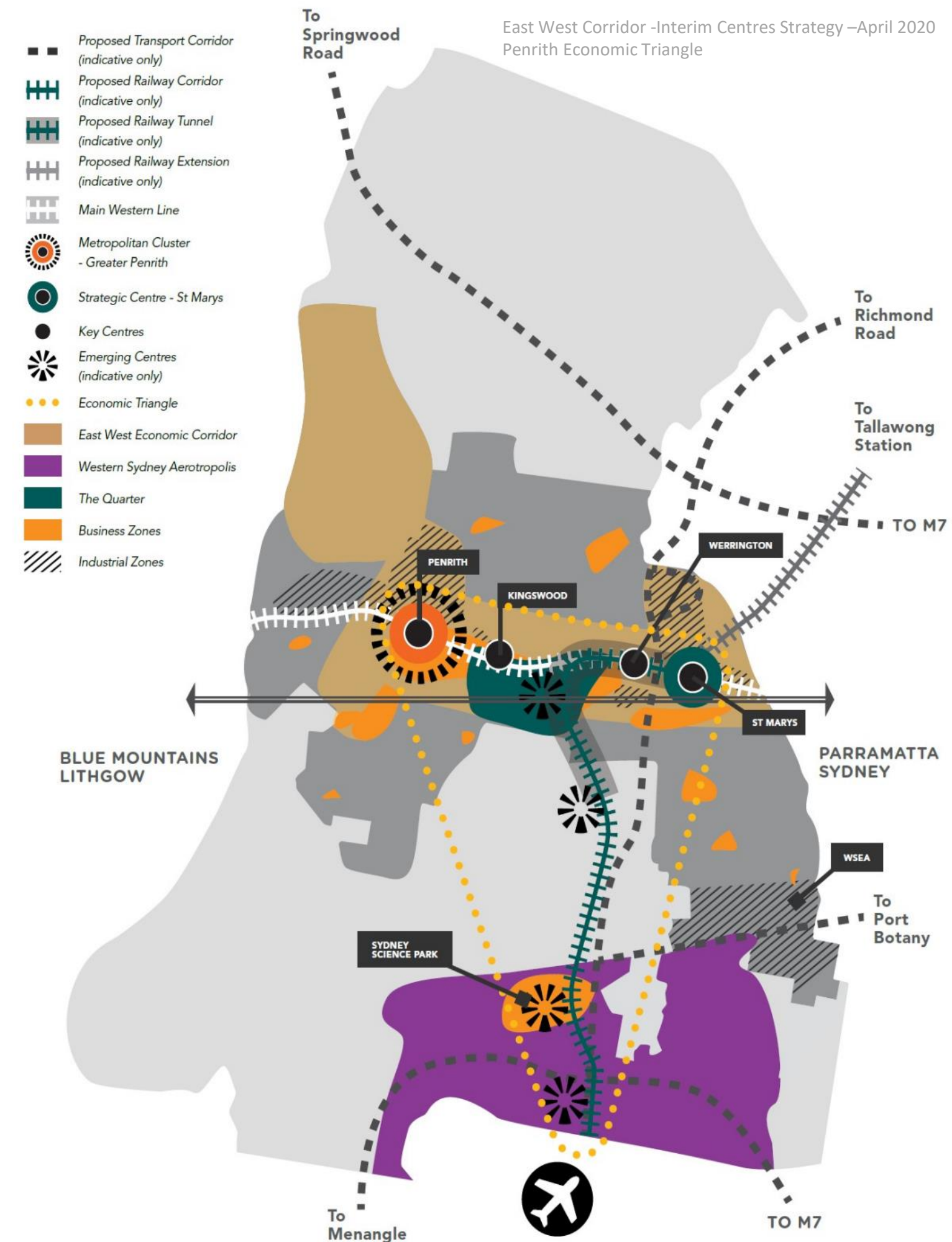
An economic development strategy:

- Leveraging infrastructure growth to drive smart jobs and the knowledge economy
- Building government and industry alignment with WSU thematic concentrations in health (Campbelltown), STEM (Kingswood-Werrington), and Agri (Hawkesbury)
- A framework for WSU engagement with opportunities at the Aerotropolis, the Advanced Manufacturing Research Facility (AMRF), and broader infrastructure investments



GREATER PENRITH DEMOGRAPHICS.

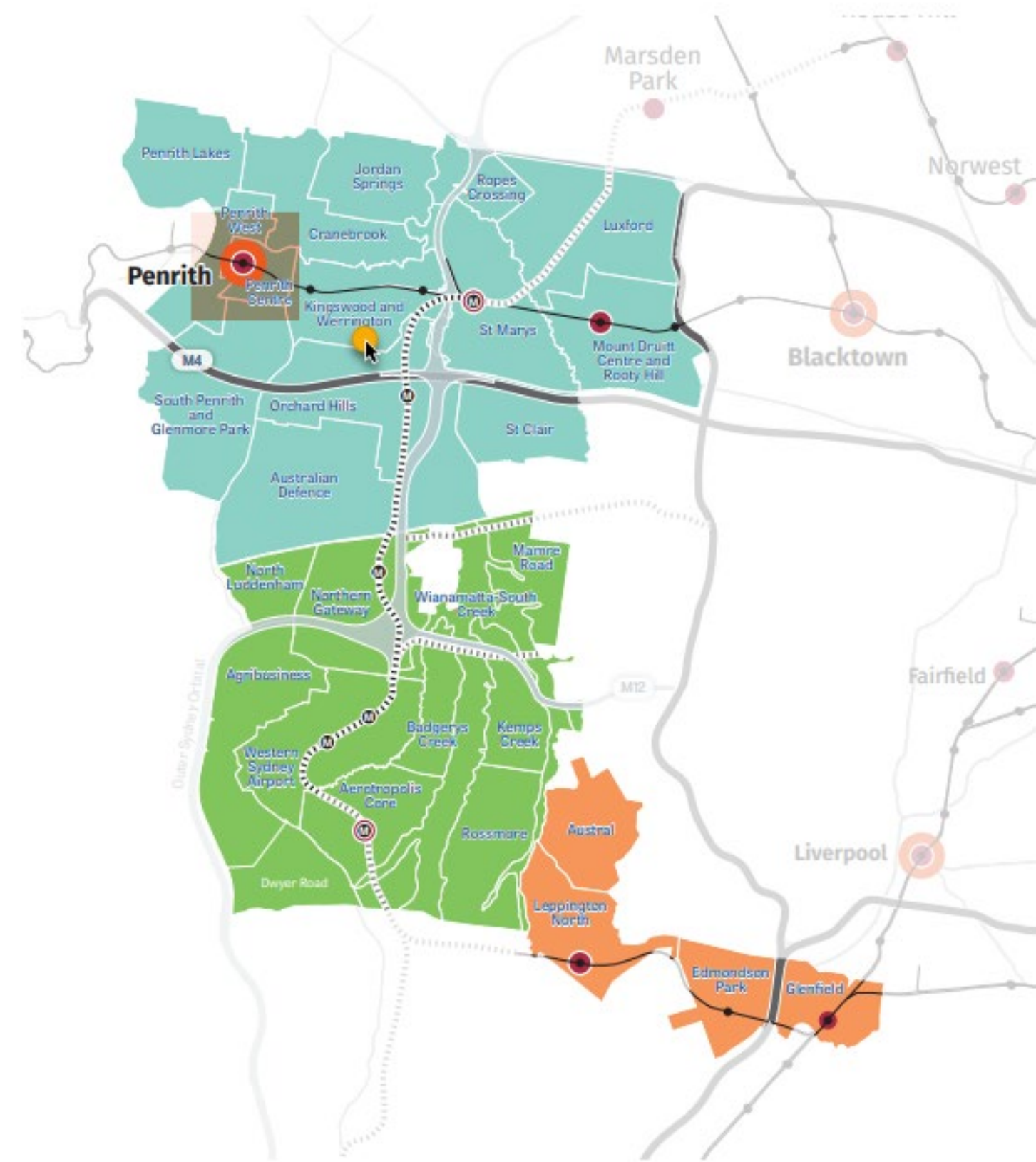
- Population – Penrith LGA: 216,282 (2020 ABS est.)
- Population growth forecast: 369,250 (2041)
- Average annual growth rate: 2.5%
- Median age 34 years; 28% under 20 years¹
- 64,830 current households²
- 80% of dwellings are low density¹
- 4.4% live in social housing²
- Economic catchment of over 1.5m people¹
- Over 60% of residents leave Penrith for work¹
- 66.5% of working residents commute by car to work²
- 11.3 billion Gross Regional Product, 1.8% of NSW (June 2020)



GREATER PENRITH STRATEGIC CONTEXT.

- Establishment of Western Parkland City Authority
- Our Greater Sydney 2056: Western City District Plan
- Western Sydney Airport and Aerotropolis
- Greater Sydney Commission, Western Parkland City Place-Based Infrastructure Compact (PIC) area & Greater Penrith Place Strategy
- Penrith City Council Economic Triangle
- Kingswood and Werrington Precinct (The Quarter)

Figure 20: The 28 precincts in the initial PIC area

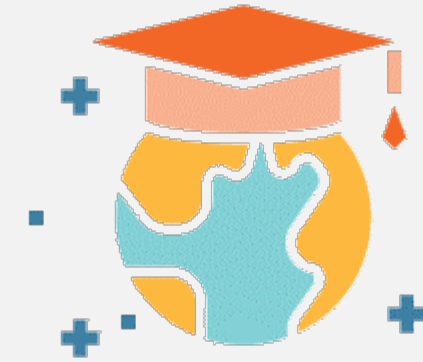


	Metropolitan Cluster		Potential future rail/metro (indicative)		Greater Penrith to Eastern Creek
	Strategic Centre		Outer Sydney Orbital (proposed)		Western Sydney Aerotropolis Growth Area
	Precinct boundary		Rail line and station (existing)		Austral to Glenfield Corridor
	Sydney Metro - Western Sydney Airport		Motorway (existing)		

THE QUARTER PENRITH – HEALTH AND EDUCATION PRECINCT.

An international destination for investment in **education, health services, research** and **related technology**.

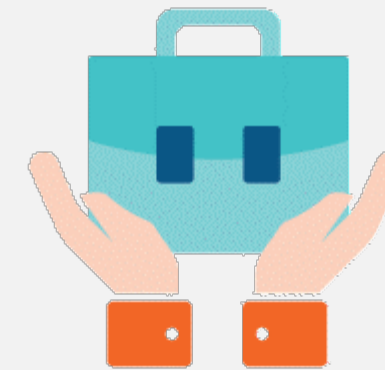
- Focus on:
 - Structure Plan/Kingswood Place Planning
 - Transport and Travel Planning
 - Economic Prospectus
- Partners include:
 - Nepean Blue Mountains Local Health District
 - Nepean Blue Mountains Education & Medical Research Foundation
 - Nepean Private Hospital
 - NSW TAFE
 - Penrith City Council
 - Primary Health Network
 - University of Sydney (Clinical School)
 - Wentworth Healthcare
 - Western Sydney University



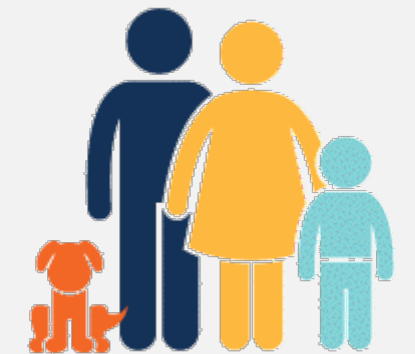
CENTRE OF EXCELLENCE IN EDUCATION



HEALTH CARE INNOVATION



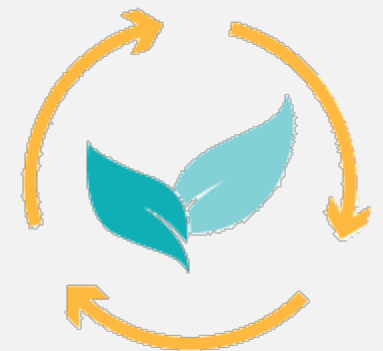
BUSINESS AND LIFESTYLE



LIVING



RESEARCH AND TECHNOLOGY



SUSTAINABILITY

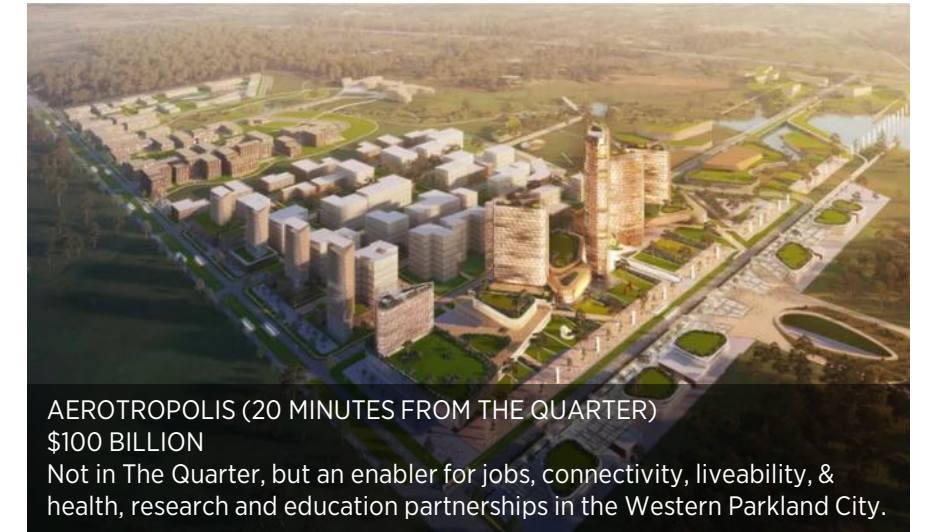
DEVELOPMENT PROJECTS WITHIN THE QUARTER PRECINCT.



NEPEAN HOSPITAL REDEVELOPMENT
\$1 BILLION
STAGE 1 (UNDER CONSTRUCTION); STAGE 2 (CONCEPT)



TAFE NSW INSTITUTE OF APPLIED TECHNOLOGY FOR CONSTRUCTION
\$80 MILLION
SPECIALISED EDUCATION FACILITY (DESIGN STAGE)



AEROTROPOLIS (20 MINUTES FROM THE QUARTER)
\$100 BILLION
Not in The Quarter, but an enabler for jobs, connectivity, liveability, & health, research and education partnerships in the Western Parkland City.



SOMERSET SPECIALIST CENTRE
\$30 MILLION
4-STOREY HEALTH SERVICE FACILITY (COMPLETED 2020)



MATILDA PRIVATE HOSPITAL, KINGSWOOD
\$44 MILLION
5-STOREY HEALTH FACILITY (UNDER CONSTRUCTION)



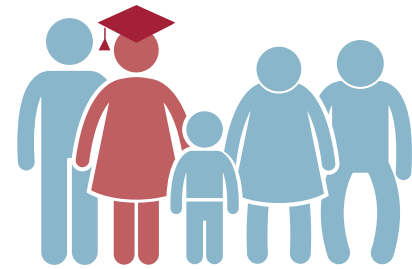
NEPEAN HEALTH HUB
\$26 MILLION
6-STOREY HEALTH SERVICE FACILITY (UNDER CONSTRUCTION)

PENRITH CAMPUS.

One of Western Sydney University's largest campuses.
Spans three sites – **Kingswood**, **Werrington North** and **Werrington South**.



5,275
STUDENTS*



65%
FIRST IN FAMILY*



32%
LOW SES STUDENTS*



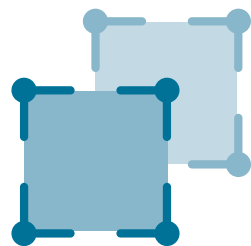
2.7%
ABORIGINAL & TORRES STRAIT
ISLANDER STUDENTS*



130+
NATIONALITIES
REPRESENTED*



89%
DOMESTIC STUDENTS
LIVE IN WESTERN SYDNEY*



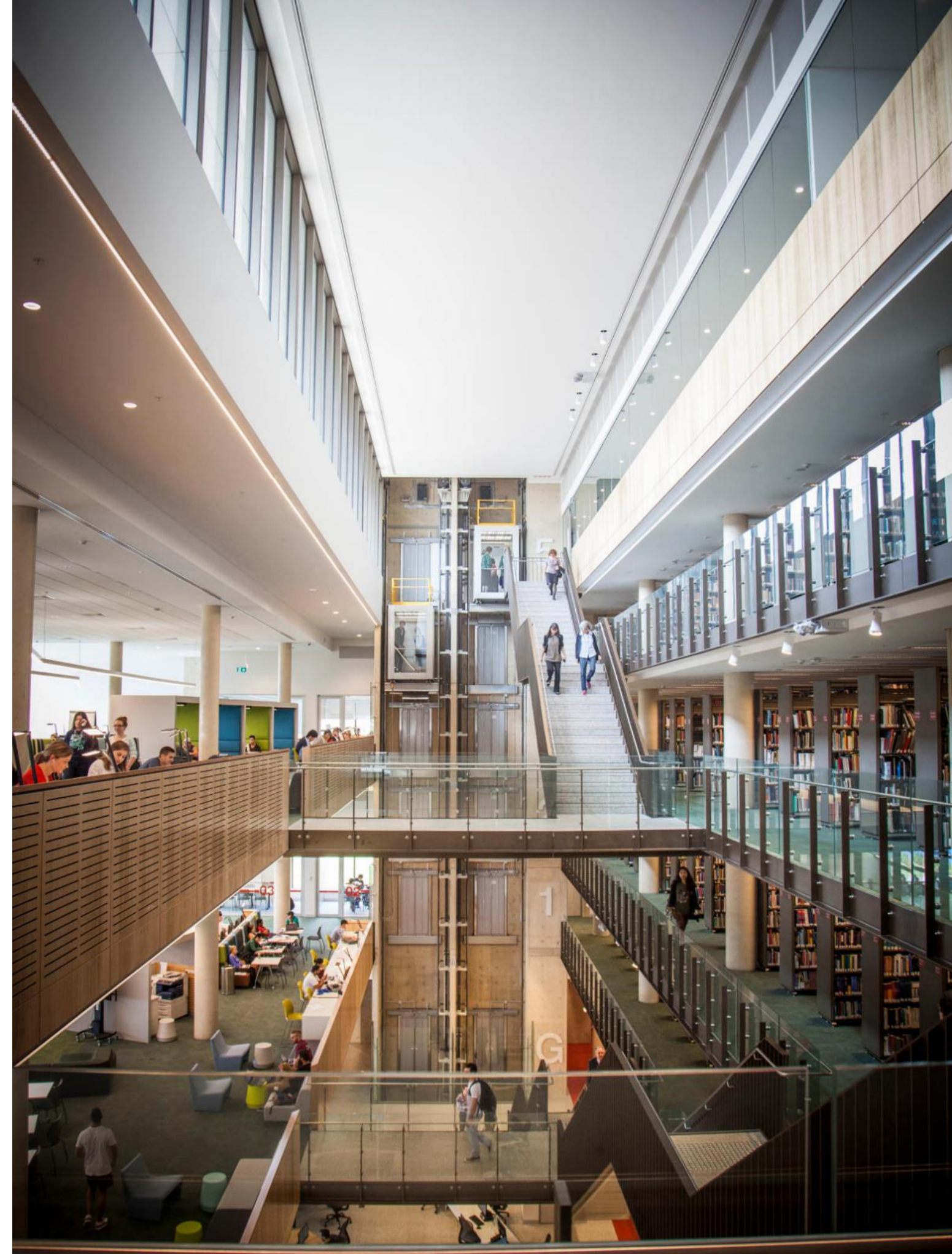
155
HECTARES



600
ONGOING STAFF*



81
BUILDINGS

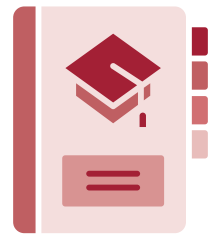


PENRITH CAMPUS

THE FUTURE OF LEARNING.



SCHOOLS



STUDY AREAS

Science, Technology, Engineering & Mathematics (STEM)

- School of Computer, Data & Mathematical Sciences
- School of Engineering, Design & Built Environment

- Building Design Management
- Computer Science
- Construction Management
- Construction Technology
- Engineering
- Information & Communication Technologies

Humanities, Arts & Social Sciences (HASS)

- School of Education
- School of Humanities & Communication Arts
- School of Social Sciences

- Anthropology
- Arts
- Communication
- Creative Music Therapy
- Criminology
- Education
- Entrepreneurship
- Humanitarian & Development Studies
- Music
- Policing
- Social Science
- Urban Planning

Health & Medicine

- School of Health Sciences
- School of Psychology

- Health Science (Health & Physical Education)
- Psychology

Co-creating curriculum with students, industry and community.



FUTURE THINKERS



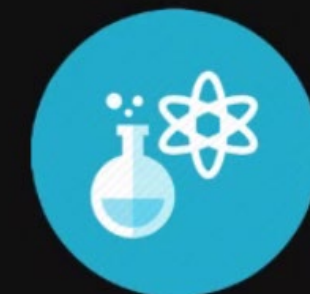
SUSTAINABILITY ADVOCATES



INNOVATIVE ENTREPRENEURS



GLOBAL CITIZENS



STEM+ CAPABLE

PENRITH CAMPUS RESEARCH WITH IMPACT.

4

WSU RESEARCH THEMES

EDUCATION AND WORK

ENVIRONMENT AND SUSTAINABILITY

HEALTH AND WELLBEING

URBAN LIVING FUTURES AND SOCIETY

22+

RESEARCH DISCIPLINES

Institutes,
Centres &
Groups

Centre for Educational Research

Centre for Infrastructure Engineering

Centre for Nursing and Midwifery
Research, Nepean Hospital

Centre for Smart Modern
Construction (S4SMC)

Centre for Research in Mathematics

Humanitarian and Development
Research Initiative

International Centre for
Neuromorphic Systems

MARCS Institute and School of
Psychology Babylab, Kingswood

Penrith Observatory & Astrophysical
eScience Laboratory (AeSciL)

Transforming Early Education and
Child Health (TeEACH)

Translational Health Research Institute



BENCHMARKING
SUMMER HEAT
ACROSS PENRITH



MAKING
CONCRETE
CHANGE



CULTIVATING CREATIVITY

NAMING THE WORLD: EARLY
YEARS LITERACY AND
SUSTAINABILITY LEARNING



A CHANGING VIEW OF OBESITY MEDICAL CARE

INNOVATE @ PENRITH.

Building Western Sydney's **ecosystem** as an **innovation destination** for local and global impact

- Higher Education Entrepreneurship Training
- Research Translation & Commercialisation
- Start-up Incubation & Acceleration Programs
- SME innovation and digital transformation
- Research Consulting & Business/IP Services
- Industry up/re-skilling, VET, micro-credentials, online training
- Research and development partnerships
- Maker Space, prototyping hub & AR/VR Digital Lab
- Co-working facilities and industry co-location



A vibrant connected business community helping to meet the region's demand for **new high-tech industries** and **knowledge-economy jobs**.



Home to innovators working together to **rethink, redesign, and launch** products and companies that enrich our lives.

MASTER PLANNING.



APRIL 2015
OFFICIAL OPENING
Werrington Park
Corporate Centre
commenced operations.

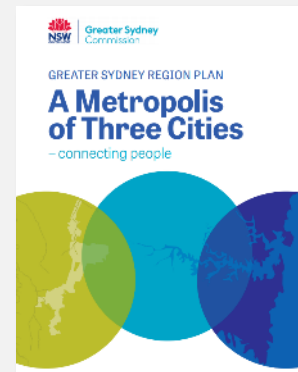
2017
THE QUARTER, PENRITH.
2017-2021 Action Plan
Launched.



JULY 2019
GREATER SYDNEY
COMMISSION
Greater Penrith Place
Strategy launched.

SEPTEMBER 2019
SOD TURNING
Sod Turning Ceremony
at Caddens Corner,
Werrington South
Campus.

LATE 2021
PARTNERSHIP
Penrith Campus
development partnership
to be established



2017
GREATER SYDNEY
COMMISSION
Identified a Metropolis
of Three Cities.

DECEMBER 2018
REZONING OF THE
WERRINGTON CAMPUS
Planning proposal was
lodged with Penrith City
Council for the rezoning of
the Werrington Campus.



DECEMBER 2020
OFFICIAL OPENING
Caddens Corner.

2022
EXPECTED COMMENCEMENT
Penrith Campus Redevelopment,
including Penrith Sustainable
Innovation Community initiatives.

CONCEPT MASTER PLAN – UNDER REVIEW.



- 
1 COMMUNITY, FUNCTIONAL AND FOOD & BEVERAGE SPACES
- 
2 APARTMENTS
- 
3 TOWNHOUSES
- 
4 SENIORS LIVING
- 
5 PRIMARY SCHOOL
- 
6 MIX OF APARTMENT TYPES & SMALL COMMERCIAL TENANCIES
- 
7 TOWN CENTRE: RETAIL, HEALTH & EDUCATION JOBS, TRAIN STATION, APARTMENTS
- 
8 NEIGHBOURHOOD CENTRE
- 
9 ACTIVE SPORTS PRECINCT
- 
10 CONSOLIDATED & EXPANDED WSU CAMPUS
- 
11 PUBLIC OPEN SPACE
- 
12 GREEN SPINE



**PENRITH SUSTAINABLE
INNOVATION COMMUNITY.**

PROJECT VISION.

Bringing together university, industry and community to co-create a **sustainable urban ecosystem**. A place where people will **live, work** and **learn** in a community with high amenity and connectivity.

The new urban precinct will be:

- The centre of a 'knowledge network' linked to the Western Sydney International Airport and across the Western Parkland City;
- An economic centre and anchor for The Quarter Penrith Health and Education Precinct;
- An exemplar of integrated education and engaged research to explore and implement new ideas and experiences for the way we live, work, and learn;
- A place of world-class sustainability, rejuvenating green space, leading urban design and 'living lab' innovation; and
- An economically, socially and environmentally sustainable community for research, innovation and impact.



DELIVERING...

- **EMPLOYMENT:** commercial floor space to support tech-jobs, highly-skilled workers and employment growth
- **INVESTMENT:** in research and education, attractive to industry partnership and co-location
- **CONNECTIVITY:** active and public transport to complement Penrith CBD and St Marys through the Quarter Penrith
- **STUDENT GROWTH:** with capacity for student growth
- **A NEW URBAN MODEL:** innovative and integrated living, working and learning
- **SUSTAINABLE:** Green star community, climate sensitive design, open space networks, sustainable transport
- **SOCIAL:** diversity in housing mix, community infrastructure, healthy placemaking



CO-DESIGN, CO-CREATION, COLLABORATIVE PLACEMAKING.

- **RESEARCH INFORMED PLACEMAKING:** academic cross-disciplinary perspectives contributing to innovative and sustainable development
- **STUDENT INTEGRATION:** student participation in planning, advocacy, project based learning and skills development
- **CO-CREATE & CO-LOCATE:** like-minded industry partnerships that will drive research-led innovation and contribute to the knowledge network
- **COMMUNITY ENGAGED:** diversity of voices engaged in precinct creation and activation; leveraging from the synergies of co-location



KEY THEMES.

Connectivity - Transport

Active, sustainable, innovative, safe, accessible and equitable transport options.

Connectivity - Digital

Smart places; Integrating digital technologies into the built environment.

Sustainable Design & Construction

Incorporating interdisciplinary research in sustainable design and sustainable construction materials.

Housing Diversity

Diverse social and affordable housing to meet community need and lifecycles.

Social & Cultural Wellbeing

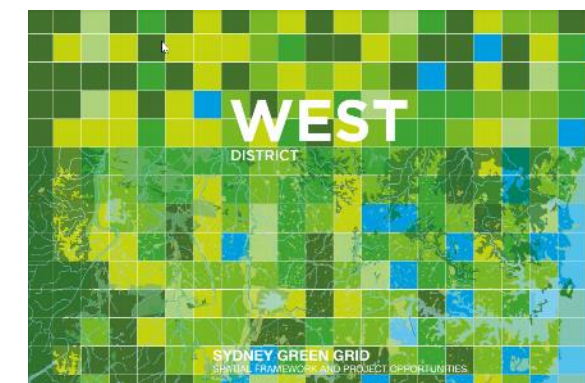
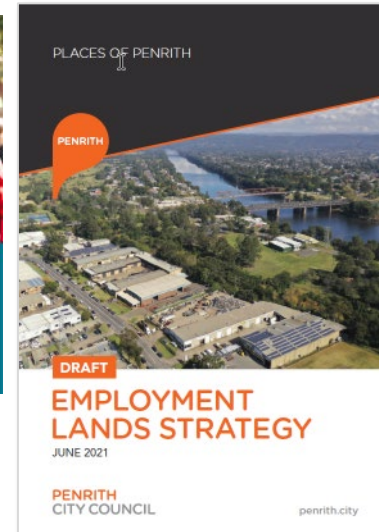
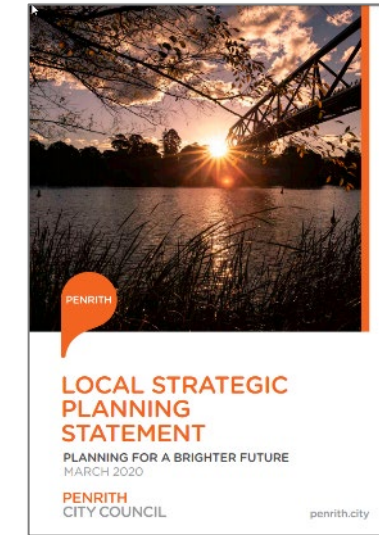
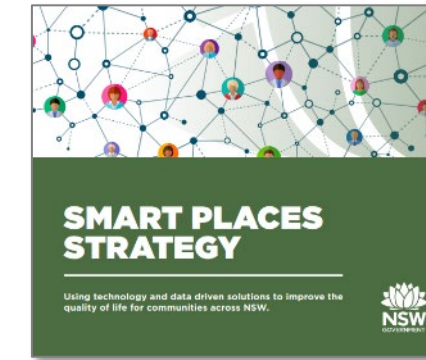
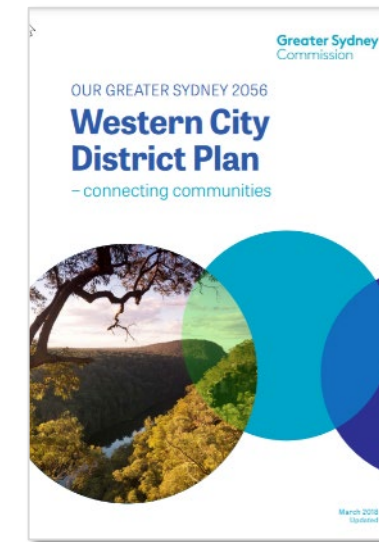
Integrating healthy placemaking with social and cultural infrastructure design.

Green - Blue Infrastructure

Green Star Community; Green and blue infrastructure, including climate sensitive design.

Sustainable & Socially Responsible Enterprises

Industry attraction and strategic partnerships; Integrated industry research; Graduate employment pathways; Local skilled job creation;



INTERDEPENDENT PROJECTS.



PARTNER OPPORTUNITY: TAFE NSW INSTITUTE OF APPLIED TECHNOLOGY FOR CONSTRUCTION

A signature training hub, equipping the next generation of trades workers the skills fundamental to building the smart cities of the future.

- Expected completion in 2023
- \$80 million capital investment value
- Direct interface to WSU Werrington South Campus site
- Responding to demand of significant infrastructure projects
- 3,500 student enrolment capacity
- 700 apprentices to be delivered per year



FUTURE OPPORTUNITY: TECH JOBS ACCELERATOR

An integrated education model to drive tech jobs acceleration.

- Industry co-location – “Smart Micro-Factory Spaces”
- Technology demo & development – “Rapid Prototyping Lab”
- Advanced skills training – “Immersive Learning Environment”
- Interface with the Aerotropolis Advanced Manufacturing Research Facility
- Creating 875 direct jobs and unlocking significant job creation across the Western Parkland City

